



KAMAR INFRASTRUCTURE PVT. LTD.

KVH 405 WITH KPP 450

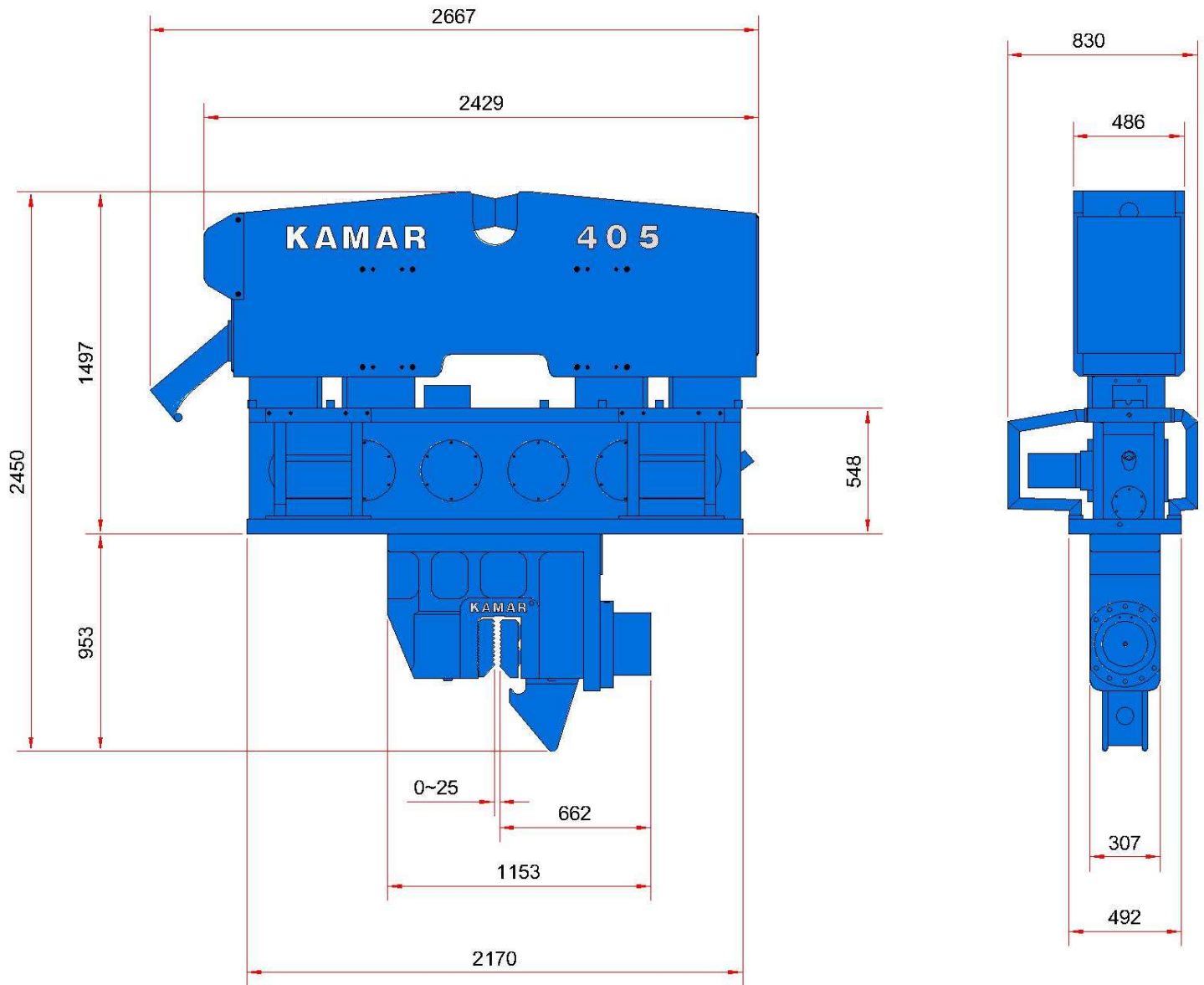
**Kamar Infrastructure Pvt Ltd, Kamar Estate, Devicha Pada, Behind Deepak
Nitrite, Talaja MIDC, Panvel-410208.Raigad.**

www.kamartools.com



KAMAR VIBRO HAMMER MODEL : KVH 405 SHEET PILE CLAMP

DIMENSION : MM

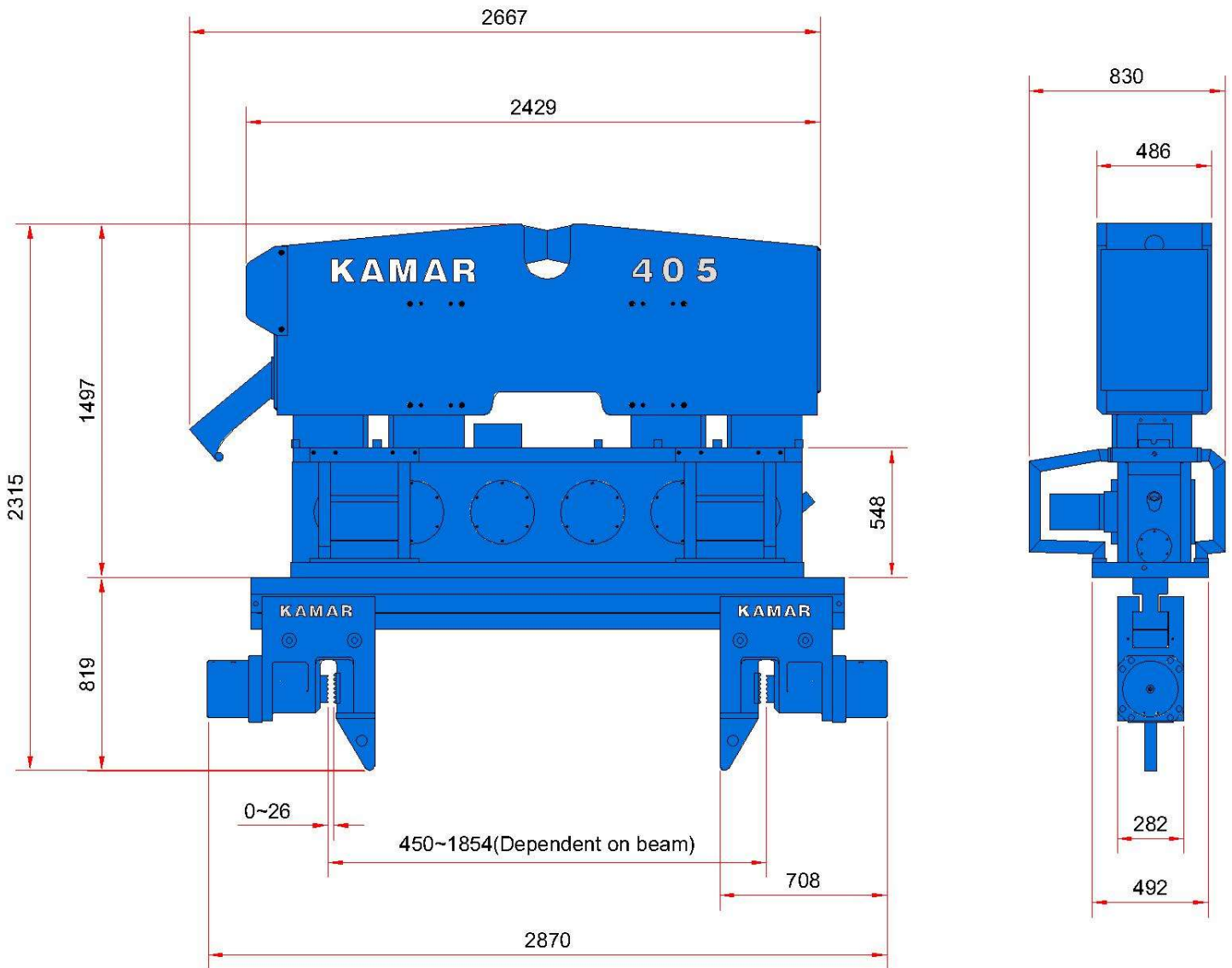


**Kamar Infrastructure Pvt Ltd, Kamar Estate, Devicha Pada, Behind Deepak
Nitrite, Taloja MIDC, Panvel-410208.Raigad.**



KAMAR VIBRO HAMMER MODEL : KVH 405 DOUBLE CLAMP

DIMENSION : MM



Kamar Infrastructure Pvt Ltd, Kamar Estate, Devicha Pada, Behind Deepak Nitrite, Talaja MIDC, Panvel-410208.Raigad.



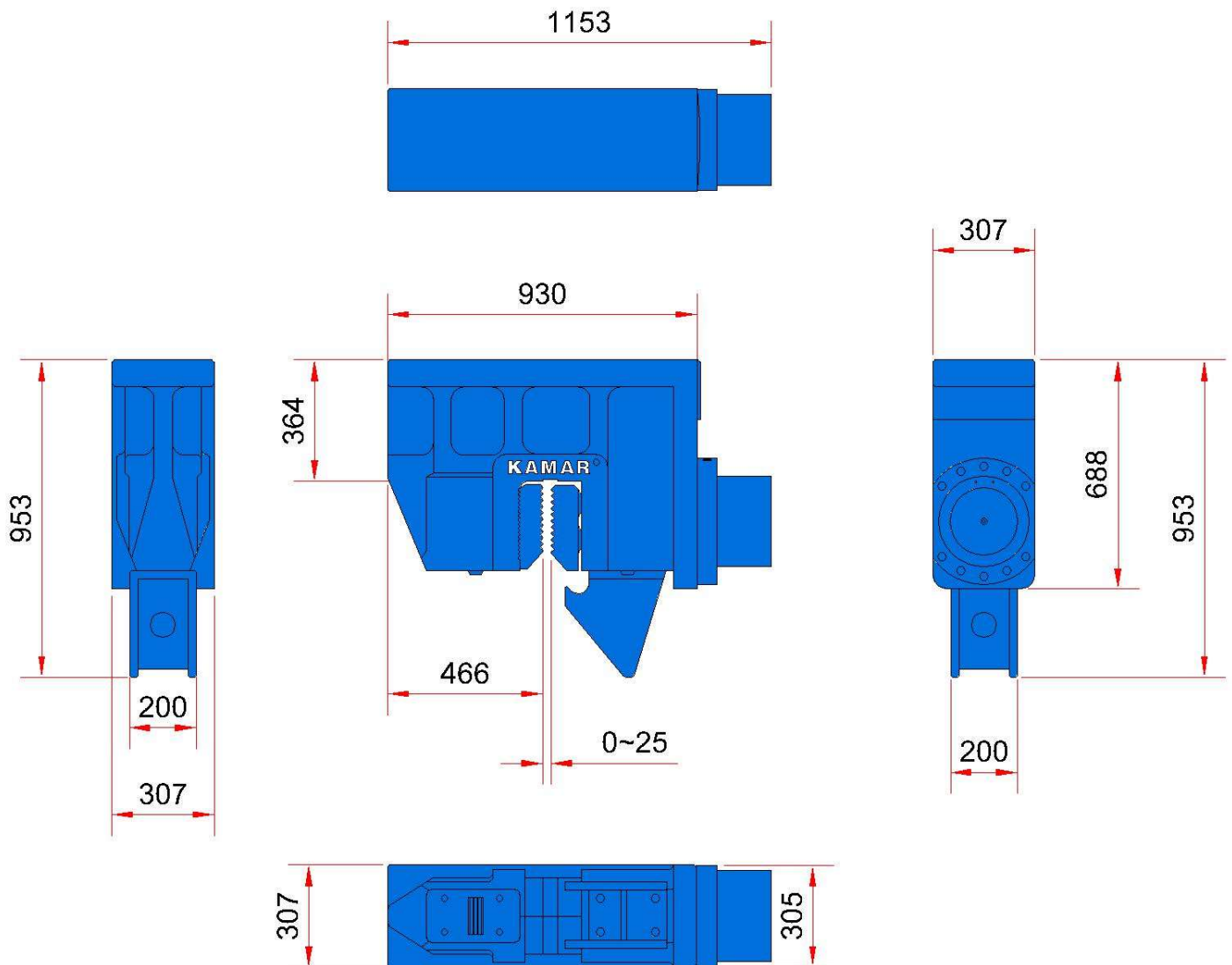
SPECIFICATION

VIBRO HAMMER SERIES			KVH 405
< OPERATING DATA >			
Eccentric moment		(kg-m)	25.4
Max. frequency		(vpm)	1860
Max. Centrifugal force		(kN)	972
Max. Amplitude		(mm)	25
Max. line pull for extraction		(kN)	355
Max. hydraulic power		(HP)	206
Max. operating pressure		(bar)	350
Max. oil flow		(lpm)	310
< DIMENSIONS >			
Overall length with hose cover		(mm)	2667
Overall width		(mm)	953
Throat width		(mm)	310
Overall height with sheet pile clamp K-126		(mm)	2450
< CLAMPS >			
Sheet pile clamp K-126	Clamping force	(tons)	126
	Weight	(kg)	900
Double clamp 2 X K-80 For casing pile	Clamping force	(tons)	2x80 = 160
	Weight of clamp	(kg)	2x450 = 900
	Beam Length	(mm)	2510
	Weight of beam	(kg)	506
	Casing pile range	(mm)	min. 450~max. 1854
< WEIGHT >			
Total weight with sheet pile clamp K-126		(kg)	4180 + 900 = 5080
Total weight with double clamp 2xK-80		(kg)	4180 + 900 + 506 = 5586
Suitable Pack Series			KPP 450



KAMAR VIBRO CLAMP MODEL : K-126

DIMENSION : MM

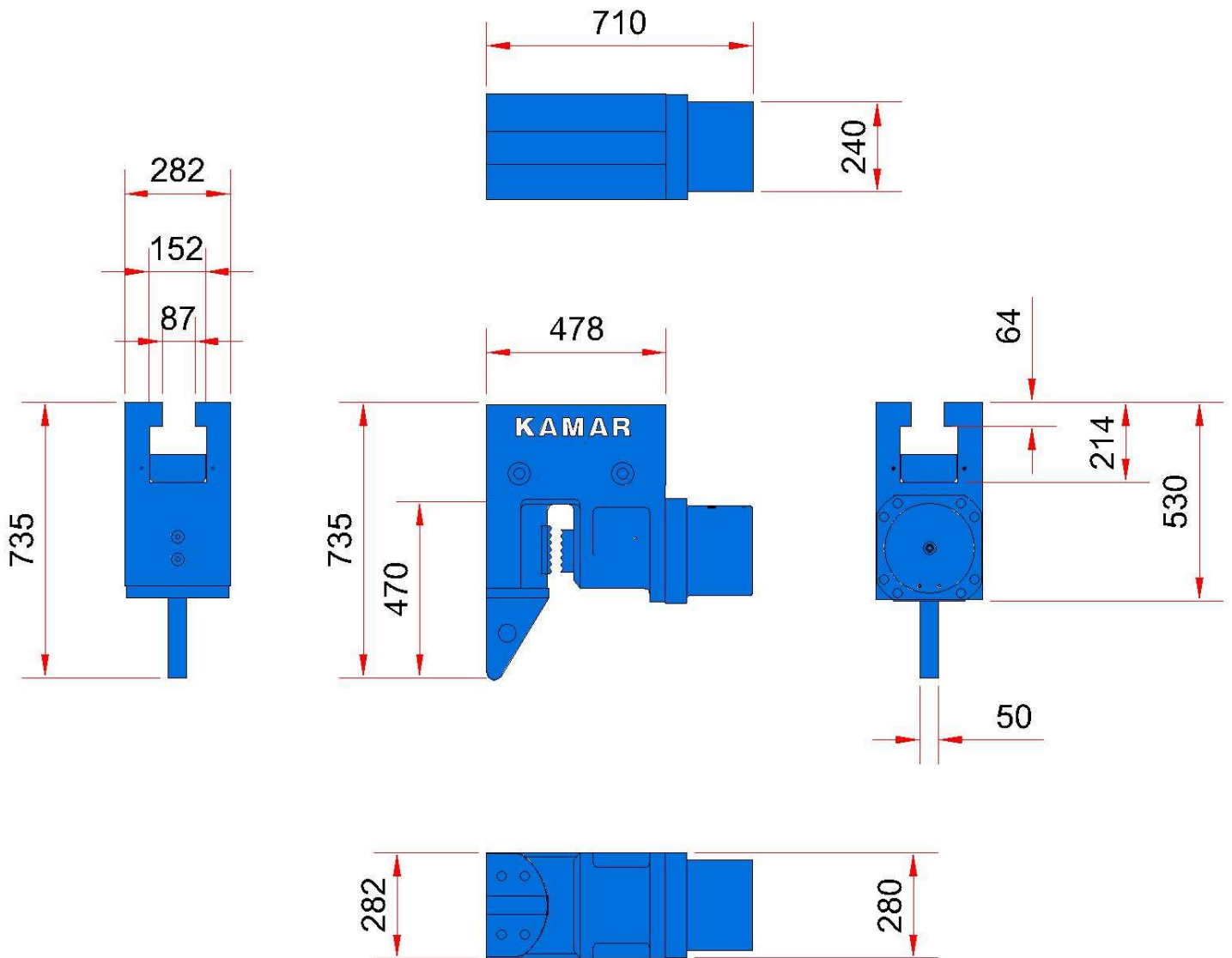


**Kamar Infrastructure Pvt Ltd, Kamar Estate, Devicha Pada, Behind Deepak
Nitrite, Taloja MIDC, Panvel-410208.Raigad.**



KAMAR VIBRO CLAMP MODEL : K-80

DIMENSION : MM



Kamar Infrastructure Pvt Ltd, Kamar Estate, Devicha Pada, Behind Deepak
Nitrite, Taloja MIDC, Panvel-410208.Raigad.

SPECIFICATION



POWER PACK SERIES		KPP 450
< OPERATING DATA >		
Engine manufacturer / Model	-	Cummins Engine / QSL 8.9
Engine	(HP)	360
Engine speed	(rpm)	2100
Max. pressure	(bar)	350
Max. flow	(lpm)	399
Hydraulic tank capacity	(liter)	1200
Fuel tank capacity	(liter)	487
< DIMENSIONS >		
Overall length	(mm)	3500
Overall width	(mm)	1630
Overall height	(mm)	1950
< WEIGHT >		
Weight with operating	(kg)	5130

**HEAD OFFICE :**

Kamar Estate, Devicha Pada,
Behind Deepak Nitrite Ltd.,
Taloja MIDC, Taluka : Panvel, Dist.: Raigad,
Maharashtra - 410 208. (INDIA)

Direct No : +91 22 - 2740 1462
Tel.: +91 22 - 2741 0766 / 2741 0768
Fax : +91 22 - 2740 1460 / 2740 1458.

CORPORATE OFFICE :

20, Husain Patel Marg, Mazgaon,
Mumbai - 10. (INDIA)
Tel.: +91 22 - 2377 6024 / 2371 1811
Fax : +91 22 - 2371 3708

Mubashir A. Multani.

+91 98704 00112

info@kamargroup.com / mam@kamargroup.com